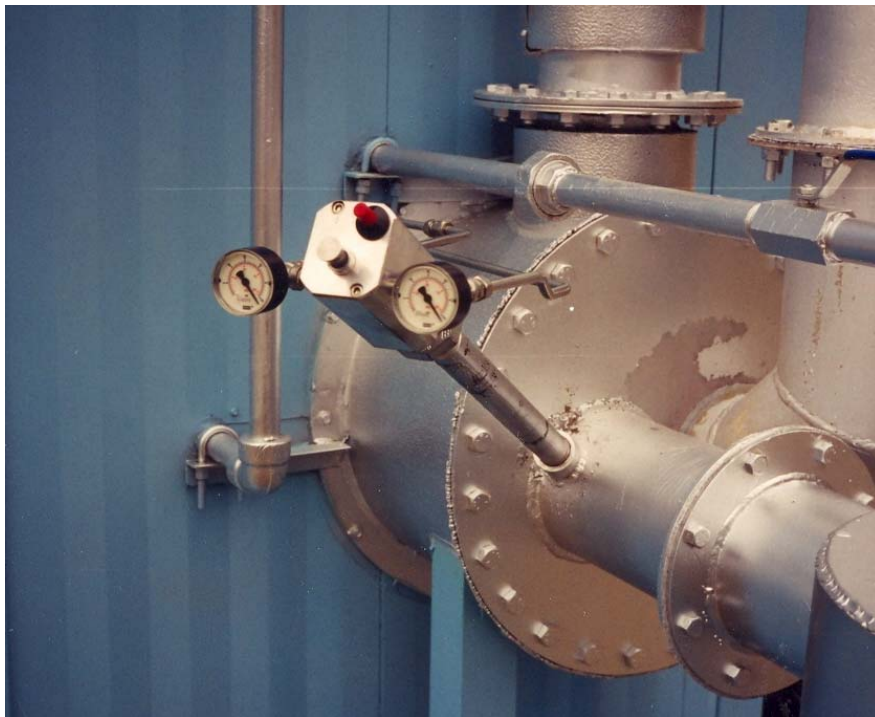


ACL

Manufacturing Inc.

ACL Ignition System **ACL Model 2000** **Flame Fail and Ignition System**

The ACL 2000 is an incredible innovation within the industry. It incorporates a pilot, ignitor, flame failure, superior stainless steel nozzle and adjustable pilot all within a compact 1 inch connection.



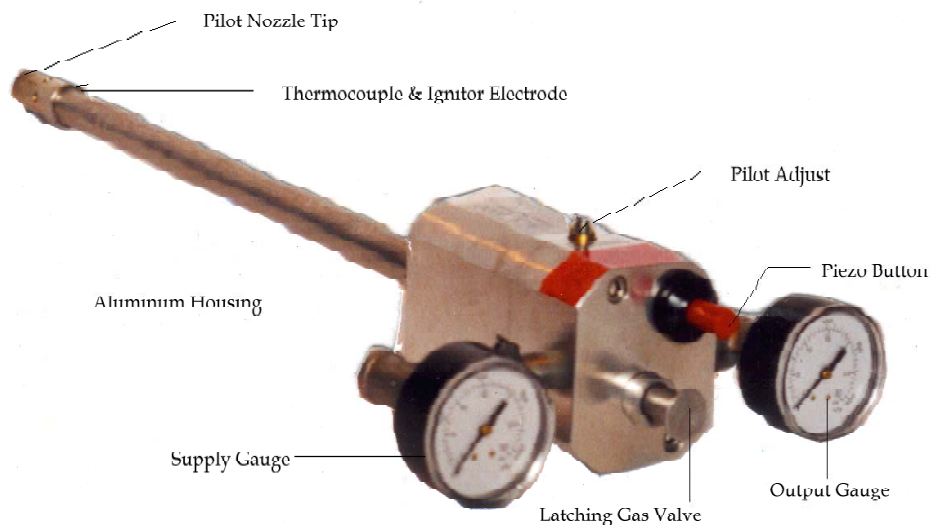
This self powered unit provides safe and reliable pilot monitoring and ignition for all types of reboilers, line heaters, treaters and many other gas fired burners.

The ACL 2000 eliminates the need for expensive latching valves, cheaters, and mounts in any position through a 1 inch NPT collar thus eliminating unnecessary welding and installation procedures.

The ACL 2000 is an economically priced innovation that replaces and improves upon all existing competitors products within the industry.

Features and Benefits

- Compact 1” connection allows for easy installation
- CGA and AGA approved gas valve to meet industry regulations
- Aluminum and SST construction resists corrosion
- Maximum fuel supply 25 psi
- Ambient operating temperature –40 degrees C to 65 degrees C
- Standard 18 inch insertion length-available up to 72 inches
- Offers alarm control capabilities to provide status on heater



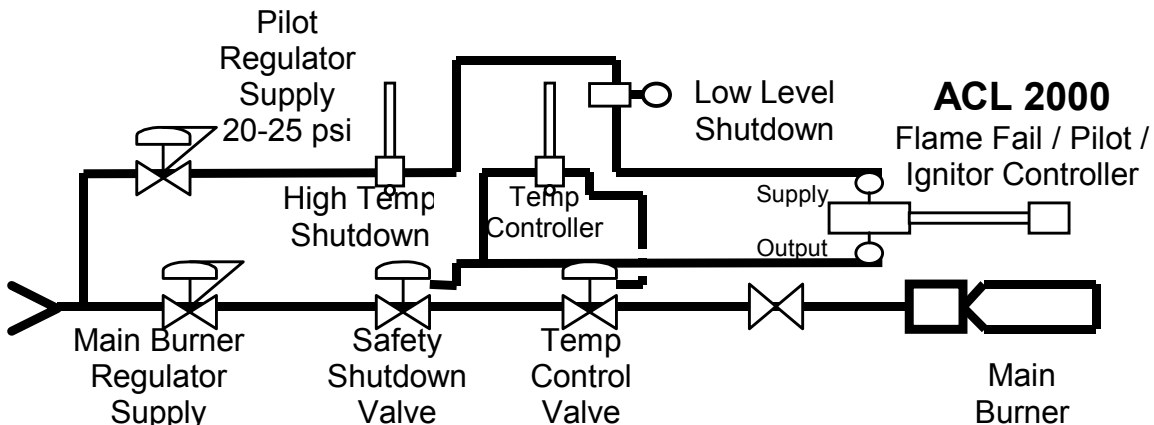
Principle of Operation

The ACL 2000 provides flame fail protection via a high temperature thermocouple and gas pilot valve. Ignition is provided by a piezo ignitor. When pushed, the spark is generated to the nozzle tip where gas is being supplied through the pilot gas valve. When the pilot flame is present after ignition, the thermocouple is energized by the heat which in turn, holds the valve in the open position. When the pilot flame is not present, the thermocouple de-energizes by cooling, effectively closing the main gas valve or heater unit. The pilot flame may be field adjusted by the needle valve, which is built into the unit.

Installation and Start-Up

- The recommended mounting location of the ACL 2000 is from the side of the burner at a 45° angle through a 1" connection either a union or a collar, and the pilot tip must not extend past the burner tip into the main flame.
- A clean, steady dry fuel gas supply (max 25 psi) is required for optimum reliable operation.
- On installations where only wet fuel gas is available it is recommended that a coalescing filter be installed before the gas leaves the heated building or directly after the filter regulator.
- Purge the air and debris from the lines up to the unit. Proceed to light the ACL 2000 as per instructions on which are on other side of card.
- The pilot adjustment valve has been factory set for use with a 20 psi fuel supply and should require no adjustment. Light the unit and fine-tune the pilot if necessary with pilot adjust valve.
- Too large of flame or too small of flame may affect the thermocouple operation.

Schematic Installation



Operating Instructions

- Push and hold pilot valve for 20 seconds.
- While pressing the pilot valve, push ignitor button.
- Release pilot valve after 20 seconds
- If pilot doesn't light repeat procedure.

Model
2000

